

Research sampling design for rock lobsters in Te Tapuwae o Rongokako Marine Reserve

DOC SCIENCE INTERNAL SERIES 128

John D. Booth

Published by
Department of Conservation
P.O. Box 10-420
Wellington, New Zealand

DOC Science Internal Series is a published record of scientific research carried out, or advice given, by Department of Conservation staff, or external contractors funded by DOC. It comprises progress reports and short communications that are generally peer-reviewed within DOC, but not always externally refereed. Fully refereed contract reports funded from the Conservation Services Levy (CSL) are also included.

Individual contributions to the series are first released on the departmental intranet in pdf form. Hardcopy is printed, bound, and distributed at regular intervals. Titles are listed in the DOC Science Publishing catalogue on the departmental website <http://www.doc.govt.nz> and electronic copies of CSL papers can be downloaded from <http://www.csl.org.nz>

© Copyright August 2003, New Zealand Department of Conservation

ISSN 1175-6519

ISBN 0-478-22456-7

In the interest of forest conservation, DOC Science Publishing supports paperless electronic publishing. When printing, recycled paper is used wherever possible.

This report was prepared for publication by DOC Science Publishing, Science & Research Unit; editing and layout by Geoff Gregory. Publication was approved by the Manager, Science & Research Unit, Science Technology and Information Services, Department of Conservation, Wellington.

CONTENTS

Abstract	5
<hr/>	
1. Introduction	6
<hr/>	
2. Tagging for growth and movements	6
<hr/>	
2.1 Background	8
2.2 Movements in CRA3, particularly those near the Reserve	10
2.3 Methods	11
2.3.1 Tag type	11
2.3.2 Tag source and costs	11
2.3.3 Tagging procedure	12
2.3.4 Numbers of lobsters tagged	13
2.3.5 Tagging logistics	13
2.3.6 Data entry	15
2.3.7 Follow-up	15
2.4 Estimates of resources required and associated costs	15
2.5 Recommended tagging schedule and associated costs	16
2.6 Summary of the information expected from this project	17
<hr/>	
3. Recruitment issues	17
<hr/>	
3.1 Background	17
3.2 Approach	18
<hr/>	
4. Pot CPUE as an index of abundance	19
<hr/>	
4.1 Background	19
4.2 Methods and logistics	20
4.3 Estimates of resources required and associated costs for initial investigation	22
<hr/>	
5. Potential sources of funding and/or in-kind support	22
<hr/>	
5.1 Current/imminent rock lobster research in CRA3	23
5.2 Possible synergies/support	23
<hr/>	
6. Acknowledgements	24
<hr/>	
7. References	25
<hr/>	

Research sampling design for rock lobsters in Te Tapuwae o Rongokako Marine Reserve

John D. Booth

National Institute of Water & Atmospheric Research Ltd, P.O. Box 14-901, Wellington, New Zealand

ABSTRACT

To determine growth rates and patterns of movement of a wide size range of rock lobsters (*Jasus edwardsii*) within and near Te Tapuwae o Rongokako Marine Reserve, it is recommended that about 6000 lobsters be tagged in and within 2 km of the Reserve in the first year for subsequent recapture. In this way information should be obtainable on moulting and growth, effects of density on growth, and movement patterns within the Reserve and across its boundaries. The surrounding Gisborne rock lobster fishery is unique in that it targets males and for a significant portion of the year is based on new male recruits about four years of age. The effectiveness of puerulus settlement levels in forecasting recruitment to the fishery could be tested by following cohorts trapped in fine-meshed pots. The proposed sampling, conducted over time, should lead to the development of an index of the relative abundance by sex and size (age) group of lobsters that can be directly correlated with the index of settlement and a catch per unit effort (CPUE) index from the commercial fishery. Identical sampling in both fished and non-fished areas will show how lobster density affects cohort abundance. The Reserve, in which dive surveys of lobster abundance are regularly undertaken and where there is no fishing, is also a suitable place to test hypotheses concerning the relationship between lobster pot CPUE and actual lobster abundance.

Keywords: rock lobster, *Jasus edwardsii*, moulting, growth, population recruitment, movement patterns, Te Tapuwae o Rongokako Marine Reserve, Gisborne, rock lobster fishery, New Zealand.

© August 2003, New Zealand Department of Conservation. This paper may be cited as:

Booth, J.D. 2003: Research sampling design for rock lobsters in Te Tapuwae o Rongokako Marine Reserve. *DOC Science Internal Series 128*. Department of Conservation, Wellington. 25 p.

1. Introduction

The establishment in 1999 of Te Tapuwae o Rongokako Marine Reserve ('the Reserve') meant that a productive rock lobster (*Jasus edwardsii*) fishing shore was no longer available to fishers. Department of Conservation (DOC), co-managers with Ngati Konohi of the Reserve, wish to ensure that information on the dynamics of the lobster stock within the Reserve is available to fishery managers, particularly as it can contribute to stock assessment and management of the broader local lobster fishing area (CRA3) as a whole. DOC therefore contracted National Institute of Water and Atmospheric Research Ltd (NIWA) to formulate appropriate lobster research, to estimate its cost, and to identify potential sources of funding. NIWA identified four areas of research that might be considered, based in part on the outcome of a meeting, between staff of DOC, NIWA, and the New Zealand Rock Lobster Industry Council (NZRLIC), that canvassed useful topics for research. (Note that the critical issue of change in abundance and size of lobsters in the Reserve following its inception is already being addressed by DOC.) These four potential areas of research are: tagging for growth and movements; cross-boundary movements; recruitment issues; and pot catch per unit effort (CPUE) as a measure of abundance.

The Reserve covers about 6 km of shore, but its asymmetric shape means that boundaries total about 21 km. The most recent and detailed map, as provided by DOC, of the boundaries and the area and extent of the reefs is shown in Fig. 1, which should be viewed together with the bathymetric chart (Fig. 2). It can be seen that reefs constitute more than 50% of the area of the Reserve. The northeast boundary bisects a reef system but the southwest one does not. Seaward (to the southeast) the reef extends to about 30 m depth and reaches within 0.5-1.5 km of the Reserve boundary. At the northeast corner, but outside the Reserve, is Monowai Rocks and associated reef. It is possible that there are small patch reefs present among all areas of soft substrate; an imminent side-scan sonar survey of the area (D. Freeman, DOC, pers. comm.) will help to elucidate this. Any such reefs, and the soft sediments themselves, may contain lobsters from time to time.

2. Tagging for growth and movements

Objective: To determine growth rates and patterns of movement of a wide size range of lobsters within and near the Reserve.

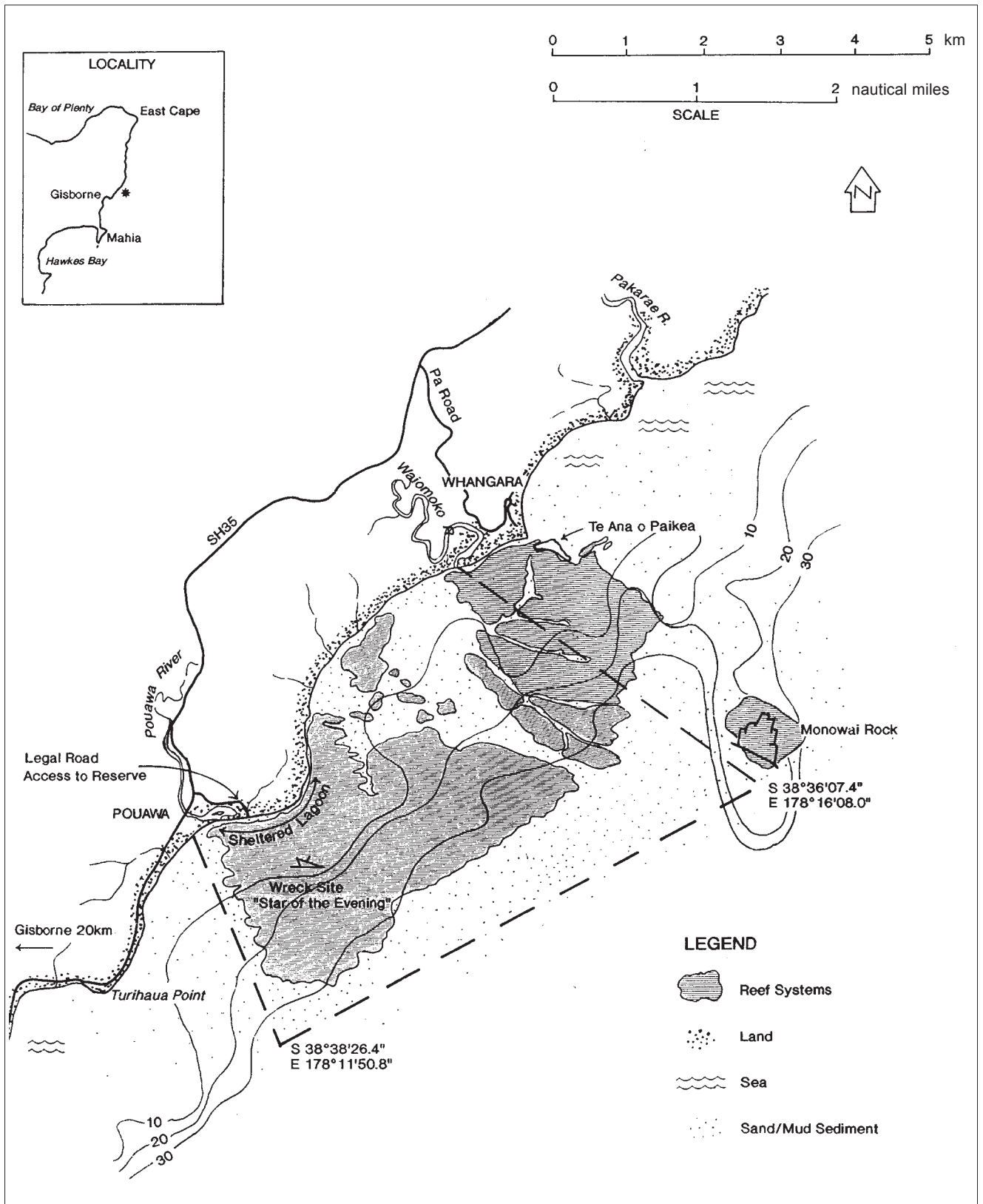


Figure 1. Map of Te Tapuwae o Rongokako Marine Reserve, prepared by Survey Gisborne Ltd for East Coast Conservancy, DOC. Boundaries are indicative only, depths are in metres.

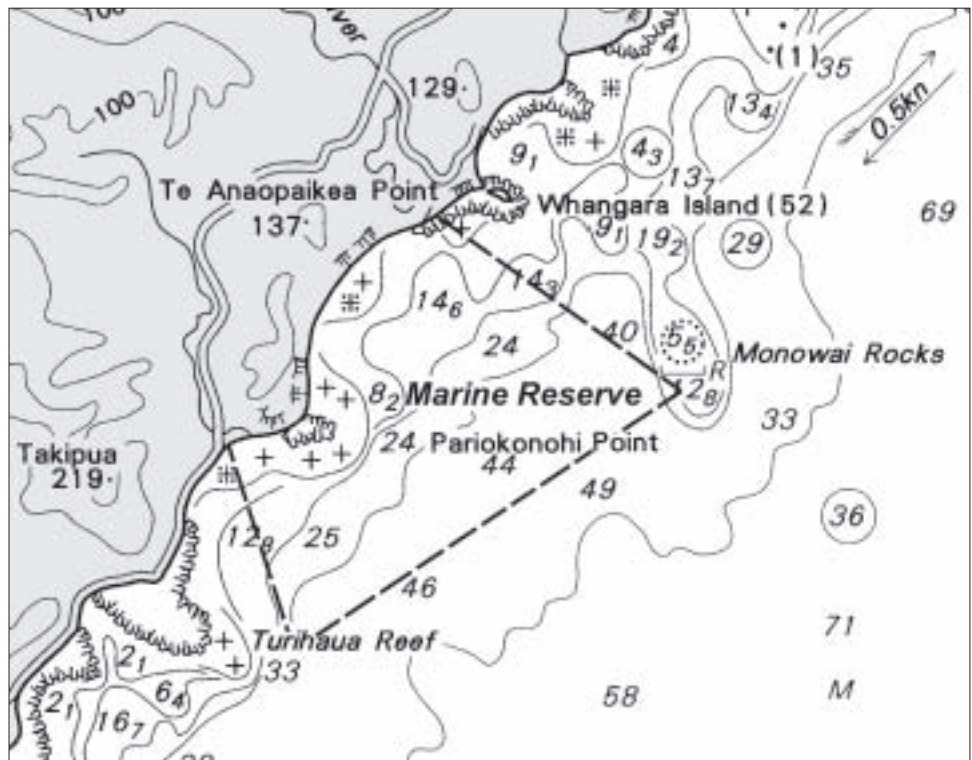


Figure 2. Extract from bathymetric chart (NZ55), showing depths (m) of Te Tapuwae o Rongokako Marine Reserve.

2.1 BACKGROUND

The length-structured stock assessment models presently used for CRA3 and for other rock lobster stocks are very sensitive to growth estimates and there is ongoing need to update and refine these estimates. Furthermore, for most stocks and areas there is little growth information for small lobsters (those < 70 mm carapace length [CL], about 40 mm tail width [TW]) or larger individuals (> 100 mm CL, about 60 mm TW). Regular dive surveys in the Reserve by DOC staff, along with the dedicated potting proposed here, are an opportunity to determine growth not only of lobsters near minimum legal size, but also of smaller and larger individuals, so contributing significantly to the information available for the CRA3 stock assessment.

Lobster growth is almost certainly density-dependent (McGarvey et al. 1999) and in non-fished areas such as the Reserve the density of lobsters is expected eventually to exceed that of the surrounding fishery. However, the newness of the Reserve probably means that densities have not yet risen to the point where growth rates are detectably different from the surrounding fished areas. As time goes by, and if densities do increase significantly, useful information could be obtained concerning the effect of lobster density (from DOC's regular dive sampling of lobster size and abundance) on growth rates within the Reserve compared with those outside in the less dense, fished populations.

This section therefore proposes a strategy for determining growth of lobsters over a wide size range within and close to the Reserve.

Tagging gives information not just on growth, but also on movements. Lobster movements in and near the Reserve important to the CRA3 fishery include:

- those one way from the Reserve into surrounding areas, perhaps in response to increased lobster density in the Reserve through absence of fishing there;
- those one way into the Reserve from surrounding areas;
- seasonal inshore-offshore movements within the Reserve and across the Reserve boundaries according to moulting, breeding, and feeding cycles;
- longer-distance, alongshore migrations originating in CRA3, ending within CRA3, or passing through CRA3.

Movements out of marine reserves—either seasonally (as at Leigh, Kelly et al. 1999) or permanently—can contribute to local fisheries. In the Reserve, the cross-boundary route most often used is probably the northeast one because the southeastern and southwestern boundaries are on average about 1 km beyond the reef edge, and over what appear to be mainly soft substrates. Tagging of lobsters within the Reserve, mainly with subsequent fisher recapture outside it, should therefore provide information on the Reserve's contribution, if any, to lobsters in the surrounding fishery—but it will be difficult to distinguish temporary seasonal movements out of the Reserve from departures that are permanent.

Both seasonal and permanent migrants may also be entering the Reserve from surrounding areas. Tag movements referred to later show that what appear to be random movements of 2 km or more are not uncommon in CRA3.

Determining the timing, scale, and extent of seasonal inshore-offshore movements—whether they are confined entirely within the boundaries of the Reserve or if they involve crossing a Reserve boundary—is problematic. Very little is known about seasonal inshore-offshore movements, with only two detailed studies by size class of such movements in *J. edwardsii* in New Zealand—at Leigh (MacDiarmid 1991; Kelly et al. 1999). All other reports have been essentially anecdotal (e.g. Street 1969) or simply speculative (Sorensen 1969). The tag best suited for determining such movements are constant-tracked types as used by Kelly et al. (1999) but their deployment is very resource-intensive and only 10 or so lobsters can be tracked at any time; this is not a practical way forward at this stage but is certainly possible for the future.

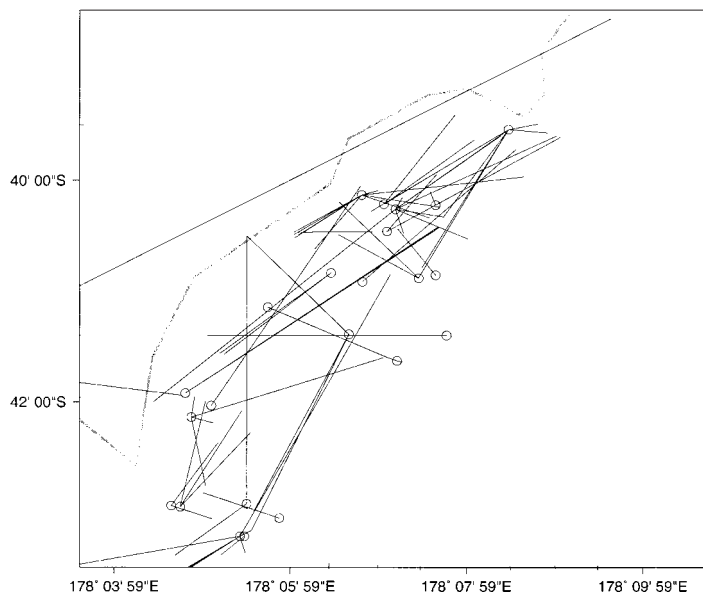
Long-distance alongshore movements appear to be crucial to larval recruitment processes in *J. edwardsii* in the south of New Zealand and the green or packhouse lobster (*Sagmariasus verreauxi*) along the east coast of the North Island (Booth 1997; Kendrick & Bentley 2002). The migrants are almost always immature females and similar-sized males (male maturity cannot be determined externally). Such migrations of lobsters may also take place in and near CRA3 but the issue is unresolved because immature lobsters in CRA3 and surrounding quota management areas are small (females, at least, are less than 70 mm CL; Annala et al. 1980), smaller than those tagged in any number to date and generally too small to be routinely taken by potting. Nevertheless, there is anecdotal information from trawler fishers suggesting that there are large movements in CRA3 from time to time, particularly in spring, of mainly small

lobsters on open bottom. The Reserve provides an opportunity to develop a resource of tagged immature lobsters to test for any sign of such movements.

2.2 MOVEMENTS IN CRA3, PARTICULARLY THOSE NEAR THE RESERVE

Tagging of lobsters in CRA3 began in the mid-1970s (Annala 1981; McKoy & Esterman 1982; Annala & Bycroft 1984), continued into the early 1980s (Booth 1997), then next took place in the mid-1990s (Kendrick & Bentley 2002). All but the 1990s taggings took place before there was precise position-fixing technology such as GPS for locating the release and recapture positions; accordingly, an estimated distance moved of 5 km was considered to be the minimum detectable in the early studies. Taggings in the 1970s and 1980s (2847 tagged, 1142 recaptured) showed very small proportions of lobsters (0.5-3.1% of recaptures) moving more than 5 km. The 1990s taggings in CRA3 (6313 tagged, 252 recaptures), in which positions were fixed by GPS, showed similarly low frequency of movements exceeding 5 km. During the 1990s taggings, no tagged lobsters were released and recaptured within the area of the Reserve or within 5 km of its boundary (Ministry of Fisheries [MFish] *tag* database, administered by NIWA), but the nature of movements that might be expected to occur in the area of the Reserve are suggested by those seen slightly further south. Figure 3 shows all movements in the area between Tatapouri and Tuaheni Point from the 1990s taggings. Most movements were short-distance (less than 2 km) and alongshore, but similar numbers moved northeast as moved southwest. Thus in order to determine the extent of any movements into the Reserve, whether seasonally inshore-offshore or permanent, it is suggested that some tagging needs to take place outside the Reserve, within *at least* 2 km of its boundaries.

Figure 3. Movements of lobsters tagged between Tatapouri and Tuahine Points, 1990s. Latitudes are 38°S; circle gives tagging position.



2.3 METHODS

Three tag groups within and near the Reserve are considered:

- Tag Group 1. These are 70–100 mm CL lobsters, the size group routinely tagged in CRA3. The lobsters would be caught primarily by potting both inside and within 2 km of the Reserve boundary.
- Tag Group 2. Small lobsters (< 70 mm CL), caught primarily by diving within the Reserve.
- Tag Group 3. Large lobsters (> 100 mm CL), caught primarily by diving inside the Reserve.

For all three groups, multiple recaptures and re-releases are likely, which increases the potential information contribution of each tagged lobster. As time goes by and the lobsters within the Reserve increase in mean size, more Tag Group 3 lobsters should become available to research potting within the Reserve.

2.3.1 Tag type

The tag type recommended is that used elsewhere in New Zealand, the Hallprint T-bar anchor tag. For Tag Group 1 lobsters this is the standard T-bar anchor tag (TBA-1 tag). Although not formally tested for its effect on lobster survival and growth, this tag is less invasive because of its smaller T-section than the western rock lobster tag, which itself has been shown in laboratory experiments to have little effect on growth and survival (McKoy & Esterman 1981). However, the western rock lobster tag is not suitable for lobsters smaller than 70 mm CL (McKoy & Esterman 1981; NIWA unpubl. results; C. Gardner pers. comm.), nor probably is the standard T-bar tag. However, the Hallprint Mini T-bar anchor tag (TBF-1) has been found to perform well with small lobsters (those down to about 30 mm CL (Gardner et al. 2001)), and this is the type that should be used for Tag Group 2 lobsters. The standard T-bar tag is probably suitable for the large (Tag Group 3) lobsters but DOC should be watchful for signs of the tag filament restricting moulting through being too short.

It was originally proposed that the tags used within the Reserve be indistinguishable from those in the surrounding fishery, but NZRLIC says that this cannot be so (D. Sykes, pers. comm.). It is recommended that DOC use sequentially numbered T-bar anchor tags with DOC printed on the 'spaghetti' portion. Tag colour might or might not be the same as that already used in CRA3. NIWA maintains the tag number sequence for all MFish-funded lobster taggings; DOC should consult NIWA to ensure that any tag numbers in CRA3 are used only once.

2.3.2 Tag source and costs

Tags can be obtained from: Hallprint Pty Ltd, 15 Crozier Rd, Victor Harbour, South Australia 5211 (phone +61 8 8552 3149; fax +61 8 8552 2874; e-mail mikehall@hallprint.com.au).

Both types cost \$(A)560 per thousand (as of 15 July 2002) and come in a range of about 10 colours. Allow 8–10 weeks from ordering to delivery. The tagging

gun recommended is the Dennison Model 08958 (Avery-Dennison Group), which costs about \$(NZ)120.

Like the CRA3 tags, it is recommended that there be a 2 cm 'chew buffer' beyond the end of the text on the tag (see below) and further, that the tag number should appear closest to the T-section.

2.3.3 Tagging procedure

There is debate as to the best position for tag insertion—dorsal or ventral. Almost all tagging in Australia and South Africa is ventral, because there the tag is better protected and not so subject to preening damage and so remains visible longer. However, in New Zealand all tagging has been dorsal, so for consistency, dorsal tagging is also recommended for the Reserve.

Tag Group 1 lobsters will be caught mainly in commercial pots and the lobsters tagged on the vessel, while lobsters of the other two groups will, at least in the early years, be mainly captured by divers and tagged underwater. The tagging method is the same for all groups. Lobsters should be tagged immediately they are caught. For pot-caught lobsters, keep them out of wind and direct sunlight. The tag is inserted into the dorsal thoracico-abdominal musculature between the anterior edge of the first abdominal segment and the posterior edge of the carapace and to the left or right of the midline. Take care not to insert the T-section of the tag too deeply, particularly with the small lobsters, because it is easy to penetrate the body cavity, with unknown and possibly unwelcome consequences. Release lobsters as quickly and as close as possible to the point of capture to reduce any displacement effects and to minimise losses due to handling.

Records taken are the sex, CL, TW, moult stage, stage of sexual maturity (females), and the GPS location, depth, and date of capture and release. Damaged lobsters (including those with any missing limbs) should not be tagged, but if after tagging limb(s) are lost, the limbs missing should be recorded. CL and TW are measured with vernier calipers to the nearest 0.1 mm, using modified verniers for TW. CL is the distance from the antennal platform to the dorsal posterior margin of the carapace along the dorsal mid-line. TW is the distance between the tips of the pleural spines of the second abdominal segment. Moulting stage is assessed according to Musgrove (2000, fig. 6), and the second left pleopod is clipped by cleanly removing its distal third with scissors. Multiple recaptures of the same lobster provide special opportunities to track growth and movement and pleopods should be re-clipped if the lobster has moulted. The biological records are described in more detail in Breen & Tyson (1998).

Growth is a composite of moult increment and moult frequency, the latter being the most difficult to determine. Records of moult stage, information additional to that obtained in the past CRA3 tagging, will allow the construction of a schedule of moulting periods by sex and size, particularly for dive-caught lobsters. The pleopod clip is used to confirm whether or not moulting has occurred, which is particularly an issue where increments are small (they can even be negative), such as in mature females and large lobsters.

2.3.4 Numbers of lobsters tagged

For growth estimates, the numbers of lobsters to be tagged ultimately depends on the variability in moult increment and frequency by size class, and the desired precision for the growth estimates. At this stage it is recommended that the numbers tagged should be gradually increased until, at the very least, the numbers of tag recaptures per kilometre of coast for Tag Group 1 lobsters in the Reserve are similar to that achieved in the CRA3 tagging to date. In the CRA3 taggings in the late 1990s, 6292 lobsters were marked over 40 km of coast of Statistical area 910, with 252 (about 4%) recaptured (Kendrick & Bentley 2002).

For the 6 km of Reserve coast, for similar rates of tagging and recapture there would need to be: about 1000 rock lobsters marked, and *at least* about 40 recaptures.

However, because the opportunity for tag recapture is likely to be much lower in the Reserve, the numbers tagged will have to be much higher per unit length of coast in order to provide for at least 40 recaptures from DOC's potting. *It is recommended that at least four times this number (4000) Tag Group 1 lobsters be tagged in the Reserve during Year 1.* This number can be increased depending on the tag return rate until at least 40 valid recaptures have been made. (Obviously the figure of 40 valid recaptures is low, and a much higher number, spread over both sexes and over a wide range of lobster size, would be desirable.) A valid recapture is one in which the lobster has moulted at least once or has been at liberty for at least three months. The numbers of Tag Group 1 lobsters tagged from potting can be supplemented during DOC's annual (January) dive surveys of lobster abundance and size.

To address the possibility of lobsters moving into the Reserve from outside, it is recommended that over Year 1 about 800 Tag Group 1 lobsters be tagged outside (but within about 2 km of) the Reserve's northeastern boundary. Lobsters could also be crossing the southwestern and southeastern Reserve boundaries because they are known to move out on to soft substrates from time to time to feed (Kelly et al. 1999) and because there may also be patch reefs present. To address this, a pilot approach is recommended, possibly involving trawling outside the boundaries; this is discussed below.

For each of Tag Groups 2 and 3 (the small and large lobsters), 600 animals of each would be an appropriate initial target for Year 1, this being reviewed according to recapture rates. An aim will be to tag over a wide size range in each of these groups, down to about 25 mm CL. Small lobsters often occur in pockets in shallow water, and it is recommended that divers return monthly to these pockets to tag, recapture, and re-release lobsters.

2.3.5 Tagging logistics

Although the next period of Mfish CRA3 taggings is not planned to begin until April 2004 (D. Sykes, NZRLIC, pers. comm.), DOC should consider beginning to tag immediately. Taggings, at least of Tag Group 1, should then be repeated in synchrony with the CRA3 tagging programme, so that these taggings can be used as direct control data for DOC to investigate such issues as density-dependence in growth and movements.

Most Tag Group 1 lobsters will comprise lobsters taken in the Reserve and within at least 2 km of its boundaries in commercial pots of the type used locally. For the southeastern and southwestern boundaries where the substrate appears to be mainly soft, potting to establish the presence of any lobsters on any isolated patch reefs or out feeding on the soft bottom will be too hit and miss to provide useful information. The following recommended strategy for the southeastern and southwestern boundaries depends on results from the imminent sidescan surveys.

1. If the sidescan surveys show the presence of more than just a few small patch reefs within 2 km of either side of the boundaries, then pot those reefs seasonally.
2. If there is no reef, or only a few small patch reefs, then seasonally trawl seaward (out to at least 2 km) of the boundaries.
3. Pot any areas where lobsters are taken in trawls.

For growth, one focused potting event each season during Year 1, aimed at tagging 1000 lobsters each season, should provide the basis for achieving 40 valid Tag Group 1 recaptures. It is recommended that an experienced local fisher be contracted to undertake this work, with pot positions being recorded using GPS. The potting should be carried out at the same positions each season so as to increase the chance of tag recaptures, as should any repeat potting in subsequent years. Anniversary recaptures are particularly useful for growth estimates because growth rate is usually expressed as annual growth, a composite of moult increment and moult frequency. Further, tagging sites should include the general areas where DOC's January dive surveys take place in order to recapture and re-release as many tagged lobsters as possible. Records of total pot contents will provide size-frequency distribution (SFD) information directly comparable to that from the commercial fishery in terms of catch rates and size of lobsters.

Diving will be required in order to obtain small lobsters, and more large individuals (Tag Groups 2 and 3). Although a single tagging event would be suitable for the large lobsters, if enough can be found, it is recommended that the numbers of small lobsters tagged be built up slowly over time. This will increase the opportunity for resightings of tagged animals of both groups and will also allow better coverage of growth of the frequently moulting small lobsters.

Tagging repeated every few years will give insight into the effect of lobster density on growth rates where there is concomitant lobster density information within the Reserve and control growth data from outside it. It is therefore recommended that tagging in the Reserve be repeated whenever there is further CRA3 tagging outside the Reserve.

Movements include those within the Reserve and those into and out of it. Within the Reserve, the seasonal potting and diving described above will give at least gross patterns of movement; these can be better defined through use of more detailed constant-tracking techniques later, if required. For the Reserve boundaries, seasonal tagging in the Reserve and within at least 2 km outside it will indicate whether any crossings are occurring and allow a more detailed research plan to be developed that, if necessary, estimates more precisely

proportions or absolute numbers crossing. Again, cross-boundary movements can be better defined through more detailed constant-tracking.

Other fishery data. In all potting, total catch SFDs by pot should be routinely recorded so that changes in SFDs and CPUE within the Reserve can be compared with these outside the Reserve collected in the MFish-funded CRA3 research.

2.3.6 Data entry

All hardcopies of tagging data should be error-checked and then entered onto a database that is consistent with the MFish *tag* database. If DOC wished, NIWA in consultation with MFish and DOC could provide a high standard of management of all tag data collected in this project.

2.3.7 Follow-up

For commercial, recreational, and customary fisher tag returns, DOC should use the systems presently in place for the other CRA3 taggings:

- Articles in *Seafood New Zealand* and the local newspaper describing the tag and the tagging programme;
- Alerting Licensed Fish Receivers of the likelihood of tagged lobsters turning up and what to do with them;
- Notices at dive-filling stations advising recreational fishers what to do with tagged lobsters.

For all recaptures, the required information is the tag number, CL, and TW, and the date, location (GPS if possible), capture method, and depth of the recapture. Many fishers will return tagged lobsters to the sea, particularly when the lobsters are undersized; many of the commercial fishers have field kits for lobster measurement and recording. Where the lobster is landed, the fisher/ Licensed Fish Receiver should be asked to measure it and record its recapture details. As is the case for the 1990s CRA3 taggings, no reward or payment for tagged lobsters should be necessary.

Tagged lobsters should be constantly watched for during DOC's diving in and near the Reserve. Over time it is possible that the home range of certain of these tagged lobsters, particularly the large ones, will become clear, making relocation for re-measurement more straightforward.

2.4 ESTIMATES OF RESOURCES REQUIRED AND ASSOCIATED COSTS

Resources required for the taggings are divided into the following categories, an *estimate* of costs within each also being given. (Note that depending on who provides the service, the cost may differ markedly from that estimated below.)

Pot vessel-day (commercial charter rate about \$100 per hour)

Dive vessel-day (charter rate about \$60 per hour)

Trawler-day (commercial charter rate about \$120 per hour)

Pot-night (commercial rate about \$5)

Tag-person-day (about \$80 per hour)

Diver-day (about \$80 per hour)

2.5 RECOMMENDED TAGGING SCHEDULE AND ASSOCIATED COSTS

Tables 1 and 2 provide possible tagging schedules for Year 1, both within and near the Reserve, which might be repeated in Years 2 and 3. They allow estimates to be made of the costs of the field work associated with the taggings, but take no account of the time needed to organise the taggings, to debrief field staff, to enter data, or to analyse data. Also not included are the costs of other

TABLE 1. SUGGESTED ROCK LOBSTER TAGGING SCHEDULES FOR YEAR 1, WITHIN TE TAPUWAE O RONGOKAKO MARINE RESERVE.

MONTH	TAG GROUPS	NUMBER TAGGED	POT VESSEL-DAYS	POT-NIGHTS	TAG PERSON-DAYS	DIVE VESSEL-DAYS	DIVER-DAYS
January	2 and 3	100	-	-	-	4 × 0.5	3 × 4 × 0.5
February	1 and 3	1000	5	4 × 30	4	-	-
February	2 and 3	100	-	-	-	4 × 0.5	3 × 4 × 0.5
March	2 and 3	100	-	-	-	4 × 0.5	3 × 4 × 0.5
April	2 and 3	100	-	-	-	4 × 0.5	3 × 4 × 0.5
May	1 and 3	1000	5	4 × 30	4	-	-
May	2 and 3	100	-	-	-	4 × 0.5	3 × 4 × 0.5
June	2 and 3	100	-	-	-	4 × 0.5	3 × 4 × 0.5
July	2 and 3	100	-	-	-	4 × 0.5	3 × 4 × 0.5
August	1 and 3	1000	5	4 × 30	4	-	-
August	2 and 3	100	-	-	-	4 × 0.5	3 × 4 × 0.5
September	2 and 3	100	-	-	-	4 × 0.5	3 × 4 × 0.5
October	2 and 3	100	-	-	-	4 × 0.5	3 × 4 × 0.5
November	1 and 3	1000	5	4 × 30	4	-	-
November	2 and 3	100	-	-	-	4 × 0.5	3 × 4 × 0.5
December	2 and 3	100	-	-	-	4 × 0.5	3 × 4 × 0.5

TABLE 2. SUGGESTED ROCK LOBSTER TAGGING SCHEDULES FOR YEAR 1, OUTSIDE TE TAPUWAE O RONGOKAKO MARINE RESERVE BUT WITHIN 2 KM OF ITS BOUNDARY.

MONTH	TAG GROUPS	NUMBER TAGGED	POT VESSEL-DAYS	POT-DAYS	TAG PERSON-DAYS	TRAWLER-DAYS	TAG PERSON-DAYS
February*	1 and 3	200	3	2 × 30	2	-	-
February	1 and 3	?	-	-	-	1	1
May*	1 and 3	200	3	2 × 30	2	-	-
May	1 and 3	?	-	-	-	1	1
August*	1 and 3	200	3	2 × 30	2	-	-
August	1 and 3	?	-	-	-	1	1
November*	1 and 3	200	3	2 × 30	2	-	-
November	1 and 3	?	-	-	-	1	1

* Denotes tagging from pots set up to 2 km seaward of the northeastern boundary.

necessities, such as measuring and recording gear, dive equipment, seagoing gear, etc., nor allowances such as overtime or accommodation.

Tagging in Years 2 and 3 would take a similar form but the numbers to be tagged would depend on the number of tag recaptures from Year 1.

2.6 SUMMARY OF THE INFORMATION EXPECTED FROM THIS PROJECT

The above approach should lead to the following information valuable to the CRA3 stock assessment:

For growth:

- moult increments and annual growth for small, mid-size, and large rock lobsters;
- moult frequencies for small, mid-size, and large rock lobsters;
- moulting calendar by size group;
- effects of density on growth, if there is repeated tagging.

For movements, preliminary information on the following, which will need to be determined before a more detailed research design can be formulated:

- seasonal patterns within the Reserve
- cross-boundary movements
- long-distance alongshore movements

Fishery data concerning:

- Pot SFDs and CPUE from an unfished population

3. Recruitment issues

Objective: To correlate the abundance over time of pre-recruit lobster cohorts to previous settlement levels in fished and unfished areas.

3.1 BACKGROUND

The Gisborne rock lobster fishery is unique in that it is mainly for males and for a significant portion of the year is based on new male recruits about four years of age. This young age at recruitment (and with less variability in age) provides an opportunity not available elsewhere in the North Island to test in detail the effectiveness of puerulus settlement levels in forecasting recruitment to the fishery by following cohorts trapped in fine-meshed pots. The design of this research will match a similar project proposed by NIWA for outside the Reserve and will address relationships between settlement levels and the subsequent abundance of juveniles, pre-recruits, and recruits.

Puerulus settlement levels are estimated at two localities near the Reserve, at Whangara just to the north and at Tatapouri just to the south. These are reported each year (e.g. Booth et al. 2002), and often high levels of variability in settlement are evident between years. High settlement years tend to be associated with El Niño conditions, the last of which was in 1998. However, another, forecast for 2002/03, would provide an opportunity to follow a strong cohort through to the fishery.

In the Gisborne area, the main settlement period is winter, with juveniles reaching 38 mm CL (about 22 mm TW) at the end of the first year, 58 mm CL (about 34 mm TW) at the end of the second year, and 68 mm CL (about 42 mm TW) at the end of the third. Standard commercial pots can provide an estimate of abundance of pre-recruit lobsters, but potting along the Kaiti shore in the early 1980s showed that fine-meshed kitchen parlour (K/P) pots caught and retained greater proportions of the smaller animals. NIWA expects to be using such pots in November off Tatapouri as an adjunct to the industry-based catch-sampling programme. It is proposed that at the same time up to 10 pots of the same style also be set within the Reserve. This will provide juvenile and pre-recruit abundance indices from both unfished and fished populations to correlate with settlement indices.

3.2 APPROACH

The pots will be fine-meshed K/P pots, fished in the Reserve during the course of the November NIWA/industry pot sampling and in the general area where DOC's January dive surveys take place. A commercial fisher will be contracted to do the potting. The lobsters will be tagged so as to add to the numbers of tags in the Reserve.

The first year will be a pilot project both within the Reserve and at Tatapouri, to determine the levels of catches and to establish overall protocols. Nevertheless, the general approach taken will reflect that used for the catch sampling but will differ in the following:

- K/P pots will be used, rather than HRC (Hurricane reinforcing concrete mesh) pots;
- potting will be more intensive and over smaller areas (about 1 km² in both areas);
- potting will be stratified, from the shallows out to the reef edge (about 40 m depth);
- the same positions will be potted each year;
- bait will be standardised (probably frozen kahawai);
- if possible, fishing will be during the new moon.

Further details are yet to be established with the commercial fisher. Procedures will be standardised between years.

This sampling would be additional to that already being undertaken by NIWA and the cost to DOC in the first year would be two pot-vessel days, approximately \$1,500 + GST. This Reserve sampling will duplicate that at

Tatapouri. NIWA will supply the pots and bait, and NIWA staff will be aboard the vessel for the potting and tagging.

Sampling beyond this first year is expected to be similar in approach, so the cost will probably remain much the same. It is expected that over time it will be possible to develop an index of the relative abundance by sex and size (age) group of lobsters that can be directly correlated with the index of settlement and a CPUE index from the commercial fishery. Identical sampling in both fished and non-fished areas will show how lobster density affects cohort abundance.

4. Pot CPUE as an index of abundance

Objective: To determine the area of attraction and effective fishing area of a standard commercial HRC lobster pot.

4.1 BACKGROUND

The New Zealand commercial rock lobster fishery is managed mainly on the basis of changes in pot CPUE (i.e. catch per pot lift) being a good proxy for changes in abundance of recruited lobsters. The Reserve, in which dive surveys of lobster abundance are regularly undertaken and where there is no other fishing, is a suitable place to test hypotheses concerning the relationship between pot CPUE and actual abundance. This would make an important contribution to the rock lobster stock assessment capability in New Zealand. At the same time there is the opportunity to investigate pot selectivity issues with respect to lobster size and sex, but this is not addressed in this document.

Two key pieces of information are required in order to quantify the relationship between CPUE and absolute abundance: the fishing radius of a pot and the actual abundance of lobsters on the seafloor. Actual lobster abundance can be determined through dive surveys. This section describes a method that could be used to determine the effective fishing area of a pot under certain conditions. There is a fairly extensive literature on this topic but it is beyond the scope of this document to summarise it all. Instead, the approach recommended here is based on a successful experimental procedure reported in the literature.

Catch per unit effort (c/f) is related to stock size (N) as

$$c/f = qN$$

where q is the catchability coefficient, defined as the fraction of the stock captured by a unit of fishing effort. If stock density (D) is substituted for stock size, and c/f is catch per potlift, the catchability coefficient becomes

$$q = (c/f)/D$$

with units expressed in area per pot haul (Miller 1990). In this application, q has also been termed the effective fishing area. If q can be estimated with enough accuracy and precision, it can be very useful for converting catch per trap to stock density (Miller 1990). However, q is smaller than the actual area from which the target animals are attracted to a trap. For these areas to be the same, 100% of the target lobsters must be captured from inside and none from outside the area. Almost certainly, a decreasing fraction would be captured at increasing distance, and over time as numbers decline.

McQuinn et al. (1988) examined the size and shape of the area of attraction and effective fishing area of a whelk trap under different physical and biotic conditions, and then attempted to validate the whelk density estimates as determined from the effective area. The effects of a number of variables (such as season, bait, depth, substratum and current) on the size and shape of the area of attraction and effective fishing area were determined. The study showed that the effective area cannot be estimated as a single, gear-specific value. Effective area estimates must therefore be determined on a site- and season-specific basis if conditions affecting the catchability of whelks vary during the fishing season and/or over the fishing area.

The approach recommended here for determining the area of attraction and effective fishing area of a standard CRA3 HRC lobster pot set in the area of the Reserve is based on that of McQuinn et al. (1988), but with a greater level of replication (three similar sites, not just one). The variable for which the effect is to be determined is season; later, if the approach is found to be useful, other variables such as pot type, bait, depth, and bottom type might be examined. The approach is summarised below; more detail is contained in McQuinn et al. (1988).

4.2 METHODS AND LOGISTICS

The pot type to be used is the one most widely fished in CRA3, the HRC pot, and the bait standardised to that most widely used in CRA3. The vessel need not be large as only a few pots are being handled at any one time.

Area of attraction and effective fishing area are estimated by releasing tagged lobsters at set distances from a baited pot and recording their recapture rates. At each of three sites, chosen because they are physically similar and workable, two 100 m lead lines are laid along the bottom, one running roughly in the direction of the dominant current and the other perpendicular to it, intersecting at the middle to produce four transect lines each 50 m long.

The tagged lobsters are collected locally and tagged with antennal tags; they preferably come from the experimental site. The antennal tags need not be sequentially numbered, but need to be coded in some manner (e.g. by colour) so that lobsters released at different distances from the baited pot can be distinguished. Three size classes (small, < 70 mm CL; medium, 70–100 mm CL; large, > 100 mm CL) of lobsters of each sex are used, giving six lobster size-sex categories (small males, medium males, large males, small females, medium females, large females). The numbers of each and the distance from the intersection of the transect lines are indicated in Fig. 4.

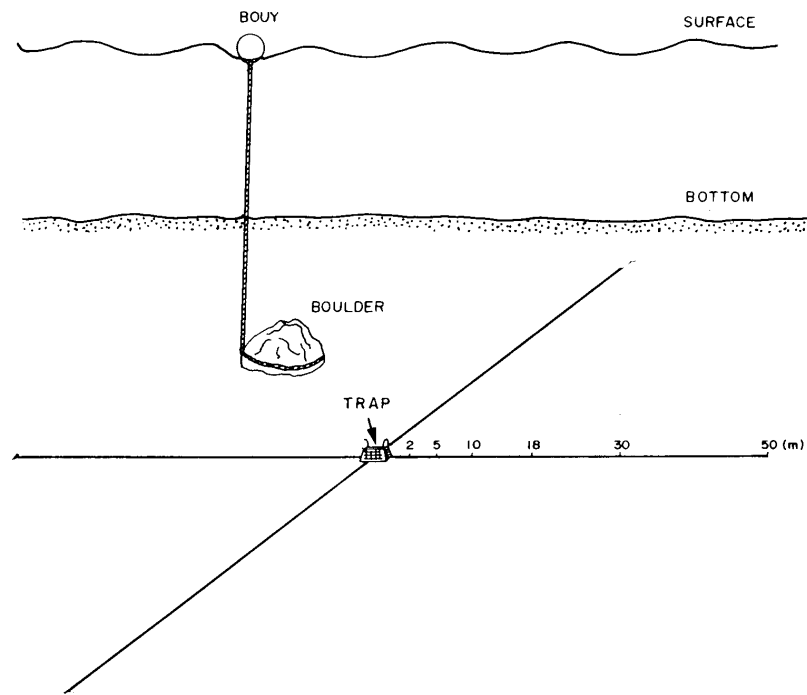


Figure 4. Design of the experimental approach. The suggested numbers of each size-sex lobster category at each of the distances from the trap are: 2 m and 5 m, one of each category; 10 m and 18 m, two of each category; 30 m and 50 m, three of each category.

A baited pot is placed at the intersection of the transect lines, the bait being contained in such a way that the lobsters cannot remove it. All captured lobsters are removed by divers after the first night and then after the second so as to avoid trap saturation.

Percentage recapture after 48 h is plotted against release distance for each transect line for each replicate. The estimated distances from the pot at which 2, 5, 10, 20 and maximum percentage recapture is attained is determined from these curves for each transect line. The points connected form a recapture rate isopleth around the trap. The area of each zone between the isopleths (S_i) is calculated; the percentage recapture (R_i) assigned to each zone is the mean value of the recapture rates of two successive isopleths; the zone nearest the pot is assigned the value of the innermost isopleth. The area of attraction is therefore the sum of the areas of each zone

$$S = \sum_1^i S_i$$

and the effective area is expressed as

$$A = \sum_1^i A_i$$

where

$$A_i = R_i \cdot S_i$$

The effective area is thus derived from the area of attraction and is expressed as a reduced, standardised area for which the recapture rate would be 100%.

It is suggested that the above approach should first be tried at one site as a pilot, and if necessary the number of tagged lobsters seeded on the seafloor, or the

distances from the pot, adjusted in order to avoid such problems as trap saturation. The area of attraction of the pot, and the effective fishing area of the pot, is then determined for three physically similar locations in the reserve and the experiment repeated seasonally at the same site.

Depending on how successful this initial investigation is, the study could be enlarged in line with the approach taken by McQuinn et al. (1988) to include:

- Define the shape of the areas of attraction and effective areas under different current conditions.
- Determine the effects of such variables as bait, depth, and substratum.
- Compare estimates of lobster density based on effective area v. absolute densities from diving.

4.3 ESTIMATES OF RESOURCES REQUIRED AND ASSOCIATED COSTS FOR INITIAL INVESTIGATION

Estimates of resources required and associated costs for the initial investigation (Table 3) are based on the same vessel, pot, and diver hire rates as indicated in above, and for three locations.

TABLE 3. ESTIMATES OF RESOURCES REQUIRED AND ASSOCIATED COSTS FOR SUGGESTED INITIAL INVESTIGATION INTO FISHING AREA OF A LOBSTER POT.

SEASON	DIVE VESSEL-DAYS	POT-NIGHTS	TAG-PERSON-DAYS	DIVER-DAYS
Summer	3 × 0.5	2 × 3	3 × 0.5	3 × 0.5
Autumn	3 × 0.5	2 × 3	3 × 0.5	3 × 0.5
Winter	3 × 0.5	2 × 3	3 × 0.5	3 × 0.5
Spring	3 × 0.5	2 × 3	3 × 0.5	3 × 0.5

5. Potential sources of funding and/or in-kind support

Organisations with a direct interest in rock lobster research in CRA3 now, or which are likely to have an interest in the future, are industry (CRAMAC 3 and NZRLIC), local iwi (Te Runanga o Turanganui a Kiwa, Ngati Konohi, Ngati Oneone, and Ngati Porou), Licensed Fish Receivers (including Moana Pacific and Gisborne Fisheries), recreational fishers, fishery managers (in particular the MFish through the Rock Lobster Stock Assessment Working Group), environmental organisations, Ministry for the Environment (MfE), and DOC itself. Those organisations currently researching lobsters in the area are NIWA,

NZRLIC, and DOC. Support might be through direct funding or in-kind cooperation. So as to be able to pinpoint any likely synergies with existing projects, the current rock lobster research, and that expected to take place in the near future, is listed below.

5.1 CURRENT/IMMINENT ROCK LOBSTER RESEARCH IN CRA3

Research being carried out by NIWA in CRA3 includes

- A MFish project that estimates levels of puerulus settlement within Port Gisborne and at Kaiti, Tatapouri, and Whangara.
- A MFish-NZRLIC project that samples the size and sex of rock lobsters taken on commercial vessels.
- A MFish-NZRLIC project that handles the returns, and information concerning returns, of recaptured tagged rock lobsters from all taggings.
- A FRST project that investigates any survival bottlenecks at and soon after settlement, at Omanuka Bay, north of Anaura Bay. A similar project is being established inside Tuamotu Island in Poverty Bay.
- A FRST project that investigates the fate and behaviour of seeded lobsters, inside Tuamotu Island.

DOC research in CRA3 includes a programme that estimates the changes in lobster size and lobster abundance in the Reserve and at nearby control sites (including Turihaua, Whangara, and Makorori).

5.2 POSSIBLE SYNERGIES/SUPPORT

NZRLIC has made it clear that any DOC tagging for growth and movement within or near the Reserve cannot take place as part of NZRLIC-NIWA research contracted to MFish. This does not, however, mean that DOC cannot separately and individually contract local fishers during the off season to pot in and near the Reserve. At least two local fishers are, apparently, prepared to contract this work.

NIWA is not able to fund any projects for the Reserve directly but is able to provide advice and discussion as projects advance.

Te Runanga o Turanganui a Kiwa, Ngati Oneone and Ngati Porou were not approached, as the Reserve is not within their rohe; Ngati Konohi is already involved, as co-managers of the Reserve.

There are three major quota holders and Licensed Fish Receivers: Moana Pacific Fisheries Ltd, Gisborne Fisheries Ltd, and No 1 Live Lobster Co. (The smaller players, not contacted but possibly still of interest, are South Pacific Fisheries and Port Nicholson Fisheries.) To quote directly, 'Gisborne Fisheries Ltd feel any cray research carried out in the marine reserve does not have any application in managing rock lobster fisheries and therefore would not support it'. Moana Pacific Fisheries Ltd and No 1 Live Lobster Co. are also unable to assist.

For the recreational fishers, discussion with Roger Faber, Club Captain for the Tatapouri Sports Club indicated that, although financial support was very unlikely, dive support from suitably qualified divers might be possible for particular projects. The club holds regular meetings and issues a newsletter every 2–3 months. Roger suggested that the way forward would be for DOC to attend one of their meetings and themselves ask for assistance or else place a notice on their notice board.

MFish is a potential funder or collaborator, from both the rock lobster stock management and the biodiversity perspectives. MFish suggested that DOC submit one or more projects from the above to them for consideration for funding.

MfE has a particular interest in the role of no-take or limited-take areas in management of commercial fisheries and would consider approaches from DOC for collaboration. Forest and Bird Protection Society does not have funding available to support such work as that planned.

6. Acknowledgements

This work was commissioned by the East Coast Hawke's Bay Conservancy of DOC and funded from the Unprogrammed Science Advice fund. The paper benefited from useful discussions and review by Dave Fisher, Megan Oliver, Don Robertson, and Brian Sanders of NIWA, Greta Point, Wellington.

7. References

- Annala, J.H. 1981: Movements of rock lobsters (*Jasus edwardsii*) tagged near Gisborne, New Zealand. *New Zealand Journal of Marine and Freshwater Research* 15: 437-443.
- Annala, J.H.; Bycroft, B.L. 1984: Exploratory fishing for rock lobsters in offshore areas near Gisborne. *Fisheries Research Division occasional publication* 45.
- Annala, J.H.; McKoy, J.L.; Booth, J.D.; Pike, R.B. 1980: Size at the onset of sexual maturity in female *Jasus edwardsii* (Decapoda: Palinuridae) in New Zealand. *New Zealand Journal of Marine and Freshwater Research* 14: 217-227.
- Booth, J.D. 1997: Long-distance movements in *Jasus* spp. and their role in larval recruitment. *Bulletin of Marine Science* 61: 111-128.
- Breen, P.A.; Tyson, P.J. 1998: NIWA rock lobster catch sampling programme data collection manual. Unpublished, available from NIWA.
- Booth, J.D.; Forman, J.S.; Stotter, D.R.; Bradford, E. 2002: Settlement indices for 2000 for the red rock lobster, *Jasus edwardsii*. *New Zealand Fisheries Assessment Report 2002/12*.
- Gardner, C.; Mills, D.; Ibbott, S.; Wilcox, S.; Crear, B. 2001: Preliminary investigation towards on-growing puerulus to enhance rock lobster stocks while providing animals for commercial culture. *FRDC Final Report, FRDC Project 1999/314*.
- Kelly, S.; MacDiarmid, A.B.; Babcock, R.C. 1999: Characteristics of spiny lobster, *Jasus edwardsii*, aggregations in exposed reef and sandy areas. *Marine and Freshwater Research* 50: 409-416.
- Kendrick, T.H.; Bentley, N. 2002: Movements of rock lobsters (*Jasus edwardsii*) tagged by commercial fishers around the coast of New Zealand from 1993. *New Zealand Fisheries Assessment Report* in press.
- MacDiarmid, A.B. 1991: Seasonal changes in depth distribution, sex ratio and size frequency of spiny lobster *Jasus edwardsii* on a coastal reef in northern New Zealand. *Marine Ecology Progress Series* 70: 120-141.
- McGarvey, R.; Ferguson, G.J.; Prescott, J.A. 1999: Spatial variation in mean growth rates at size of southern rock lobster, *Jasus edwardsii*, in South Australian waters. *Marine and Freshwater Research* 50: 333-342.
- McKoy, J.L.; Esterman, D.B. 1982: Growth of rock lobsters (*Jasus edwardsii*) in the Gisborne region, New Zealand. *New Zealand Journal of Marine and Freshwater Research* 15: 121-136.
- McQuinn, I.H.; Gendron, L.; Himmelman, J.H. 1988: Area of attraction and effective area fished by a whelk (*Buccinum undatum*) trap under variable conditions. *Canadian Journal of Fisheries and Aquatic Sciences* 45: 2045-2060.
- Miller, R.J. 1990: Effectiveness of crab and lobster traps. *Canadian Journal of Fisheries and Aquatic Sciences* 47: 1228-1251.
- Musgrove, R.J.B. 2000: Molt staging in the southern rock lobster *Jasus edwardsii*. *Journal of Crustacean Biology* 20: 44-53.
- Sorensen, J.H. 1969: The New Zealand rock lobster or marine spiny crayfish *Jasus edwardsii* (Hutton). Development, growth, embryology and development. *Fisheries Technical Report* 29.
- Street, R.J. 1969: The New Zealand crayfish *Jasus edwardsii* (Hutton 1875). *New Zealand Marine Department Fisheries Technical Report* 30. 53 p.